

Timing is everything.

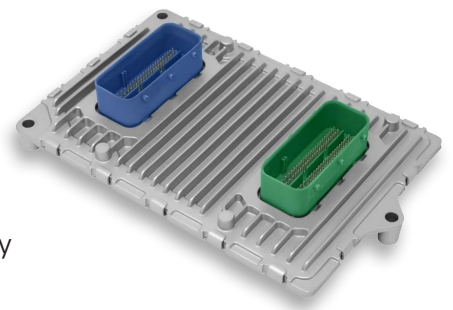
31 new SUSTAINera reman ECMs now available.

SUSTAINera reman parts are O.E. built to FCA US specifications. Your customers will enjoy the performance, quality and reliability of factory specifications, and you'll love the easy install.

THE SUSTAINera REMAN ADVANTAGE

- Genuine Mopar® performance and a comprehensive offering at a great value
- Robust remanufacturing rivals even the original engine control modules (ECMs) that came from the factory
- Ability to offer quick service turnaround with a lower-cost replacement part
- Replacement of all critical components to guarantee optimal performance and durability

See next page for part numbers and vehicle applications.



Mopar® Reman is now SUSTAINera Circular Economy.

The approach of our sustainable, comprehensive 360-degree program is reman, reuse, repair and recycle. We call it SUSTAINera Circular Economy. It promises transparent, sustainable and affordable products without compromising quality, while working to preserve the environment through decreased waste and less use of our planet's resources.



37 parts categories



Over 5 million multi-brand parts



1,000 multi-brand applications



1.7 million parts worldwide in 2022



See how SUSTAINera is making a better future.



View the entire SUSTAINera Reman Catalog.



MoparRepairConnect.com



SUSTAINera Remanufactured ECMs.

O.E. P/N	Reman P/N	MYI	MYO	Application
68330953AA	R8330953AA	2018	2018	Ram 3500 Pickup, Ram 2500 Pickup
05150872AF	R5150872AF	2015	2015	Dodge Challenger, Dodge Charger
68331222AB	R8331222AB	2018	2018	Ram 3500 Cab Chassis, Ram 3500 <10K Lb. Cab Chassis, Ram 4500/5500 Cab Chassis
05150854AC	R5150854AC	2014	2014	Ram 3500 Pickup, Ram 3500 Cab Chassis, Ram 2500 Pickup
68330922AB	R8330922AB	2018	2018	Chrysler Pacifica
05150878AE	R5150878AE	2015	2015	Ram 3500 Pickup, Ram 3500 Cab Chassis, Ram 2500 Pickup
05150883AD	R5150883AD	2015	2015	Dodge Challenger, Dodge Charger, Chrysler 300
68243296AB	R8243296AB	2015	2018	Ram 3500 Pickup, Ram 2500 Pickup
68321598AB	R8321598AB	2018	2018	Dodge Challenger, Dodge Charger
68243294AB	R8243294AB	2016	2018	Ram 3500 Cab Chassis, Ram 3500 <10K Lb. Cab Chassis, Ram 4500/5500 Cab Chassis
05150877AD	R5150877AD	2015	2015	Ram 3500 Pickup, Ram 3500 Cab Chassis, Ram 2500 Pickup
05150745AE	R5150745AE	2014	2014	Ram 3500 Pickup, Ram 3500 Cab Chassis, Ram 2500 Pickup
05150879AD	R5150879AD	2015	2015	Ram 1500 Pickup
05150869AD	R5150869AD	2015	2015	Dodge Challenger, Dodge Charger, Chrysler 300
05150897AD	R5150897AD	2015	2015	Ram 1500 Pickup
68330907AB	R8330907AB	2019	2019	Ram 1500 Pickup, Jeep® Wrangler
68243308AB	R8243308AB	2016	2018	Dodge Challenger, Dodge Charger
68243305AB	R8243305AB	2016	2019	Ram 1500 Pickup
68330904AA	R8330904AA	2018	2018	Dodge Challenger, Dodge Charger, Chrysler 300
68331184AA	R8331184AA	2018	2018	Dodge Durango, Jeep Grand Cherokee
68243309AB	R8243309AB	2016	2018	Dodge Challenger, Dodge Charger, Chrysler 300
68243322AB	R8243322AB	2016	2018	Dodge Durango, Jeep Grand Cherokee
05150855AC	R5150855AC	2014	2014	Ram 1500 Pickup
05150876AD	R5150876AD	2015	2015	Caravan / Town & Country
68331180AB	R8331180AB	2019	2019	Ram 1500 Pickup
05150945AB	R5150945AB	2015	2015	Ram 1500 Pickup
68243307AB	R8243307AB	2016	2018	Dodge Challenger, Dodge Charger, Chrysler 300
68331214AA	R8331214AA	2018	2018	Ram 3500 Pickup, Ram 3500 Cab Chassis, Ram 3500 <10K Lb. Cab Chassis, Ram 2500 Pickup
68331185AA	R8331185AA	2018	2019	Dodge Challenger, Dodge Charger, Chrysler 300
68243295AB	R8243295AB	2016	2018	Caravan / Town & Country
68243303AB	R8243303AB	2016	2019	Ram 1500 Pickup

